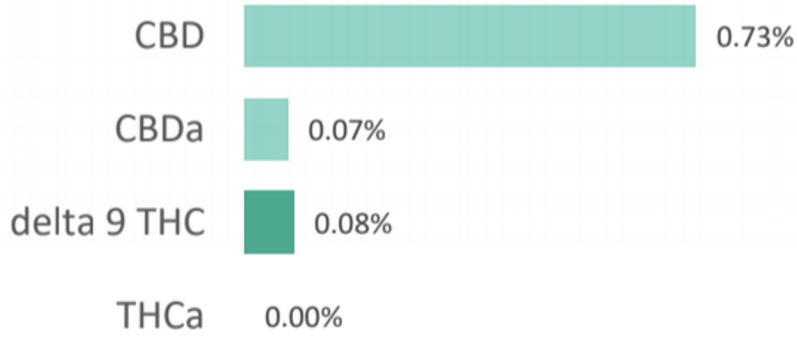
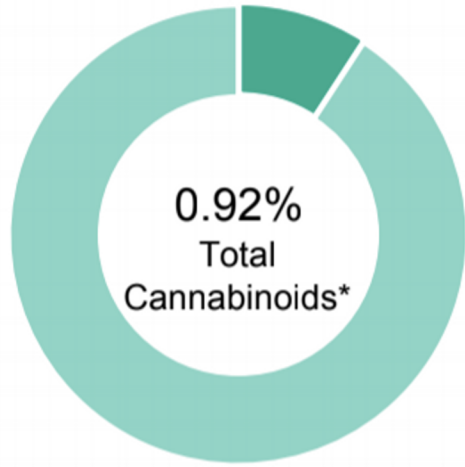


Cacao Vanilla Cinnamon

CANNABINOID PROFILE



Compound	LOQ (%)	Result (%)	Result (mg/g)
Delta 9-Tetrahydrocannabinolic acid (THCA-A)	0.07	0.00	0.0
Delta 9-Tetrahydrocannabinol (Delta 9THC)	0.04	0.08	0.8
Cannabidiolic acid (CBDA)	0.06	0.07	0.7
Cannabidiol (CBD)	0.03	0.73	7.3
Delta 8-Tetrahydrocannabinol (Delta 8THC)	0.04	0.00	0.0
Cannabinolic Acid (CBNA)	0.10	0.00	0.0
Cannabinol (CBN)	0.04	0.00	0.0
Cannabigerolic acid (CBGA)	0.06	0.00	0.0
Cannabigerol (CBG)	0.04	0.04	0.4
Tetrahydrocannabivarinic Acid (THCVA)	0.06	0.00	0.0
Tetrahydrocannabivarin (THCV)	0.03	0.00	0.0
Cannabidivarinic Acid (CBDVA)	0.06	0.00	0.0
Cannabidivarin (CBDV)	0.03	0.00	0.0
Cannabichromenic Acid (CBCA)	0.05	0.00	0.0
Cannabichromene (CBC)	0.06	0.00	0.0
Total Cannabinoids		0.92	9.20
Total Potential THC**		0.08	0.80
Total Potential CBD**		0.79	7.91

NOTES:

N/A

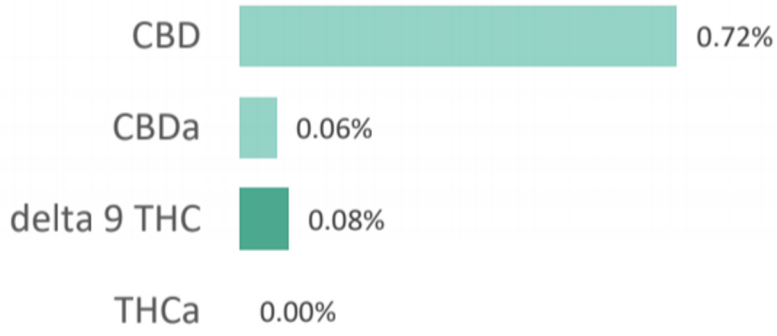
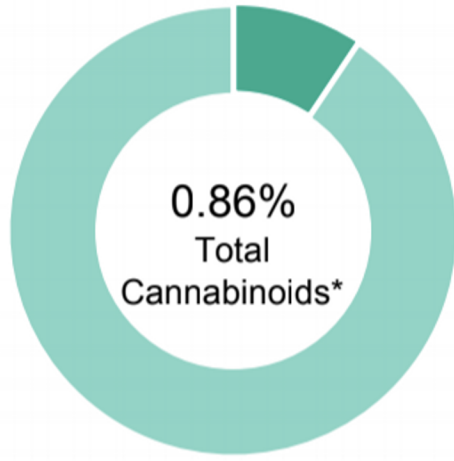
% = % (w/w) = Percent (Weight of Analyte / Weight of Product)

* Total Cannabinoids result reflects the absolute sum of all cannabinoids detected.

** Total Potential THC/CBD is calculated using the following formulas to take into account the loss of a carboxyl group during decarboxylation step.

Orange Ginger Cinnamon

CANNABINOID PROFILE



Compound	LOQ (%)	Result (%)	Result (mg/g)
Delta 9-Tetrahydrocannabinolic acid (THCA-A)	0.07	0.00	0.0
Delta 9-Tetrahydrocannabinol (Delta 9THC)	0.03	0.08	0.8
Cannabidiolic acid (CBDA)	0.06	0.06	0.6
Cannabidiol (CBD)	0.03	0.72	7.2
Delta 8-Tetrahydrocannabinol (Delta 8THC)	0.04	0.00	0.0
Cannabinolic Acid (CBNA)	0.09	0.00	0.0
Cannabinol (CBN)	0.04	0.00	0.0
Cannabigerolic acid (CBGA)	0.06	0.00	0.0
Cannabigerol (CBG)	0.03	0.00	0.0
Tetrahydrocannabivarinic Acid (THCVA)	0.06	0.00	0.0
Tetrahydrocannabivarin (THCV)	0.03	0.00	0.0
Cannabidivarinic Acid (CBDVA)	0.05	0.00	0.0
Cannabidivarin (CBDV)	0.03	0.00	0.0
Cannabichromenic Acid (CBCA)	0.05	0.00	0.0
Cannabichromene (CBC)	0.06	0.00	0.0
Total Cannabinoids		0.86	8.60
Total Potential THC**		0.08	0.80
Total Potential CBD**		0.77	7.73

NOTES:

N/A

% = % (w/w) = Percent (Weight of Analyte / Weight of Product)

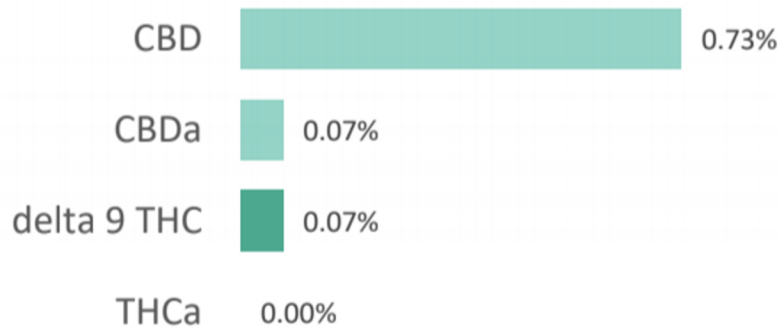
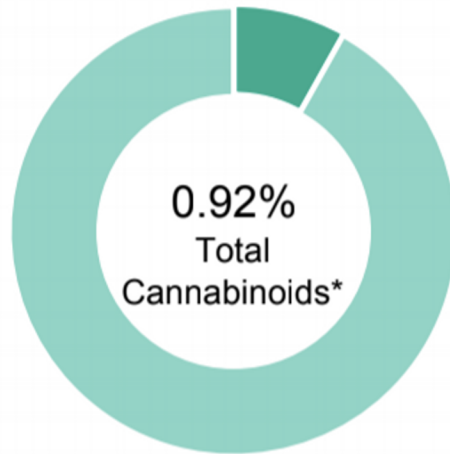
* Total Cannabinoids result reflects the absolute sum of all cannabinoids detected.

** Total Potential THC/CBD is calculated using the following formulas to take into account the loss of a carboxyl group during decarboxylation step.

Total THC = THC + (THCa *(0.877)) and Total CBD = CBD + (CBDa *(0.877))

Rosemary Mint Lemongrass

CANNABINOID PROFILE



Compound	LOQ (%)	Result (%)	Result (mg/g)
Delta 9-Tetrahydrocannabinolic acid (THCA-A)	0.08	0.00	0.0
Delta 9-Tetrahydrocannabinol (Delta 9THC)	0.04	0.07	0.7
Cannabidiolic acid (CBDA)	0.06	0.07	0.7
Cannabidiol (CBD)	0.04	0.73	7.3
Delta 8-Tetrahydrocannabinol (Delta 8THC)	0.04	0.00	0.0
Cannabinolic Acid (CBNA)	0.10	0.00	0.0
Cannabinol (CBN)	0.05	0.00	0.0
Cannabigerolic acid (CBGA)	0.07	0.00	0.0
Cannabigerol (CBG)	0.04	0.05	0.5
Tetrahydrocannabivarinic Acid (THCVA)	0.06	0.00	0.0
Tetrahydrocannabivarin (THCV)	0.03	0.00	0.0
Cannabidivarinic Acid (CBDVA)	0.06	0.00	0.0
Cannabidivarin (CBDV)	0.03	0.00	0.0
Cannabichromenic Acid (CBCA)	0.06	0.00	0.0
Cannabichromene (CBC)	0.07	0.00	0.0
Total Cannabinoids		0.92	9.20
Total Potential THC**		0.07	0.70
Total Potential CBD**		0.79	7.91

NOTES:

N/A

% = % (w/w) = Percent (Weight of Analyte / Weight of Product)

* Total Cannabinoids result reflects the absolute sum of all cannabinoids detected.

** Total Potential THC/CBD is calculated using the following formulas to take into account the loss of a carboxyl group during decarboxylation step.

Total THC = THC + (THCa *(0.877)) and Total CBD = CBD + (CBDa *(0.877))